

# 2014年患者登録/入力状況および統計解析結果

事務局

Data入力状況  
(2014/06/01 fixed)

2014/01/01~2014/12/31までの登録症例数 n= 1866

登録病変数 : 1894  
病変①: 1866 病変②: 28

画像なし n=105

n=1761

コアラボ未解析 n=45

n=1716

コアラボ解析にて  
非CTO病変 n=52  
判定困難 n=5

n=1659

n=1659

手技結果未記入 n=24

n=1635 (病変n=1657)

治療結果(主要評価項目)未記入  
(術後Crea/CINを除く) n=298

n= 1337

術後Crea/CIN未記入 n=599

n = 738

手技時間・造影剂量未記入n=52

Complete Date  
n=686 (36.8%)

# CTO 手技成功率

Strategy

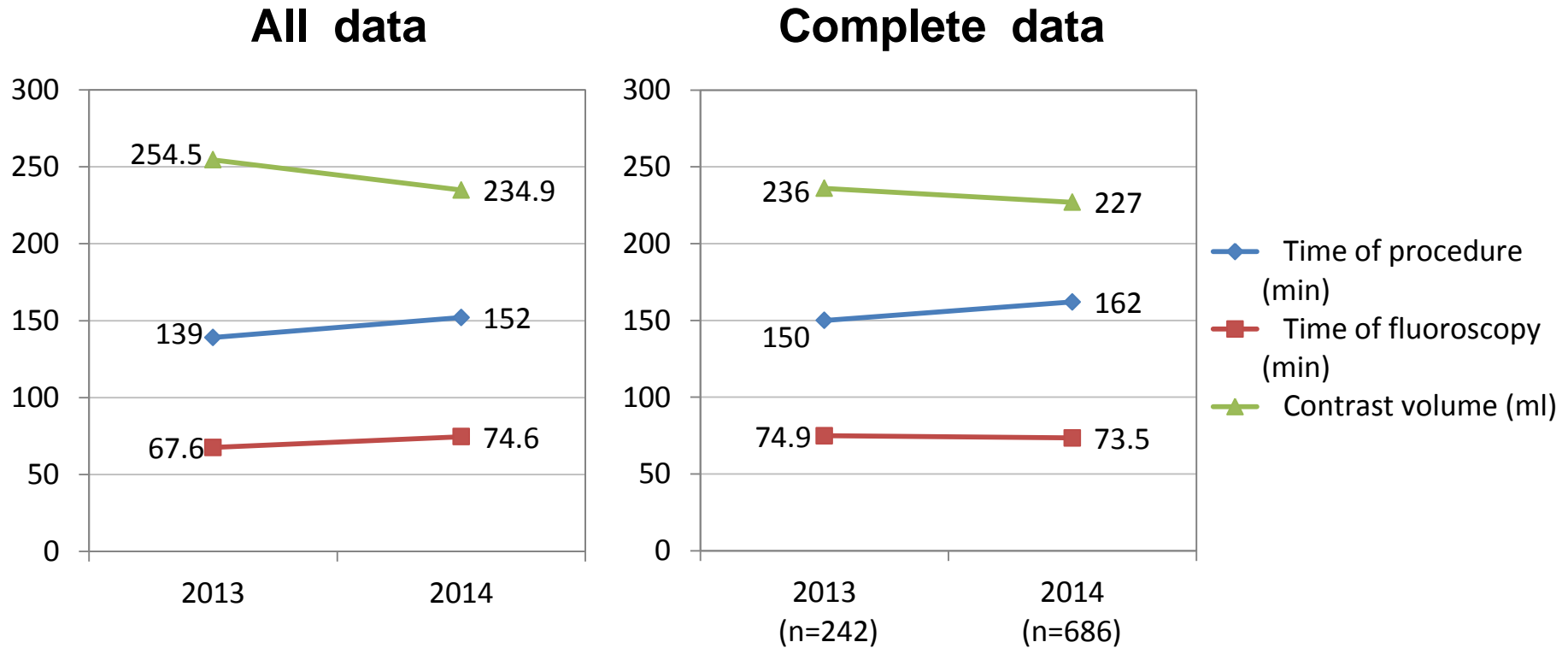
	Total	Antegrade	Retrograde
Total, n	1623	1188	435
Success, n	1510	1109	401
Success rate, %	93.0	93.4	92.2

## CTO手技 & 治療成績

	n	All procedures	n=686
<b><i>Procedural characteristics</i></b>			
Time of procedure (min)	1279	152±89	162±88
Time of fluoroscopy (min)	188	74.6±49.2	73.5±49.4 (n=111)
Contrast volume (ml)	1278	234.9±130.8	227±101
<b><i>Procedural complication</i></b>			
Contrast induced nephropathy	745	43 (5.8)	41 (6.0)
Coronary perforation	1371	57 (4.2)	34 (5.0)
Cardiac tamponade	1371	6 (0.4)	3 (0.4)
Emergency CABG	1370	1 (0.1)	1 (0.1)
Vascular access site complication	1369	11 (0.8)	6 (0.9)
<b><i>In-hospital outcome</i></b>			
Death	1371	1 (0.1)	0
Non-QMI	1364	12 (0.9)	10 (1.5)
Stent thrombosis	1372	4 (0.3)	4 (0.6)
Stroke	1355	2 (0.1)	1 (0.1)

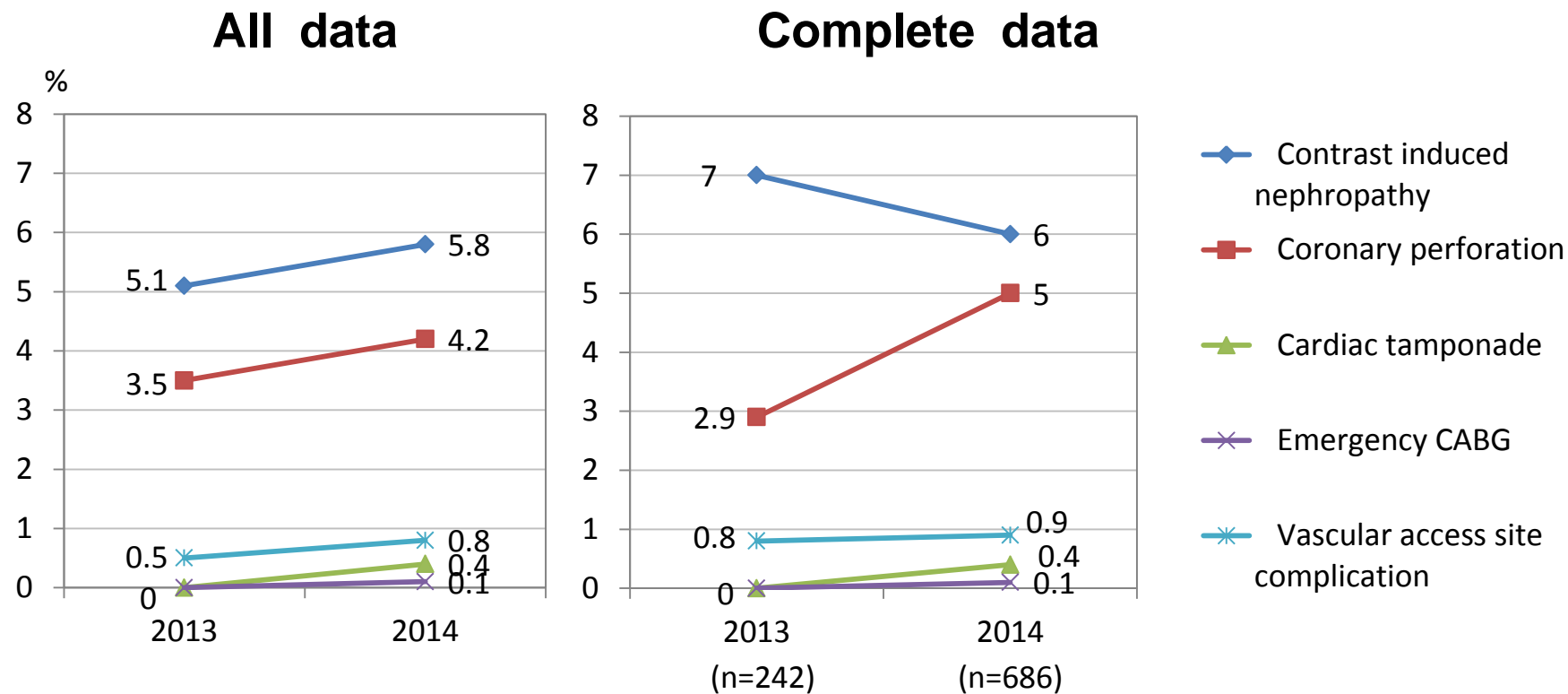
# 治療成績

# Procedural characteristics



	All P-value	Complete P-value (t-test)
Time of procedure (min)	<0.01	0.07
Time of fluoroscopy (min)	0.07	0.81
Contrast volume (ml)	<0.01	0.24

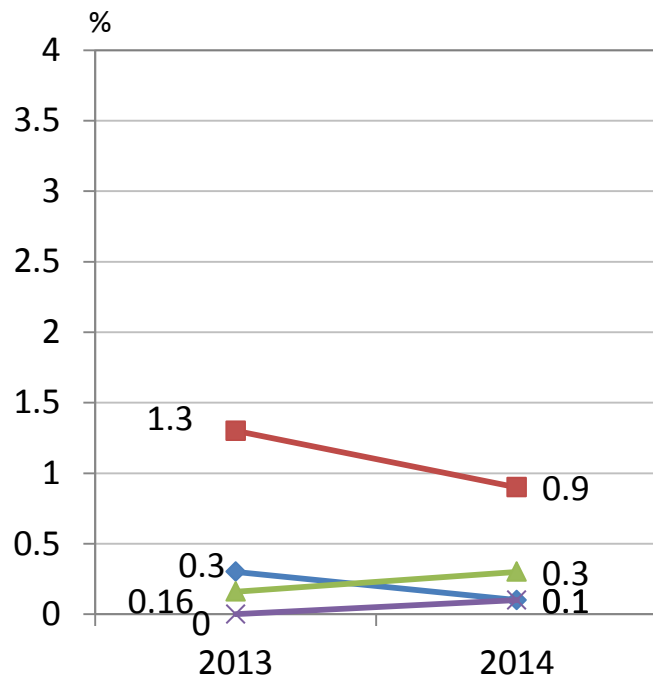
# 治療成績      Procedural complication



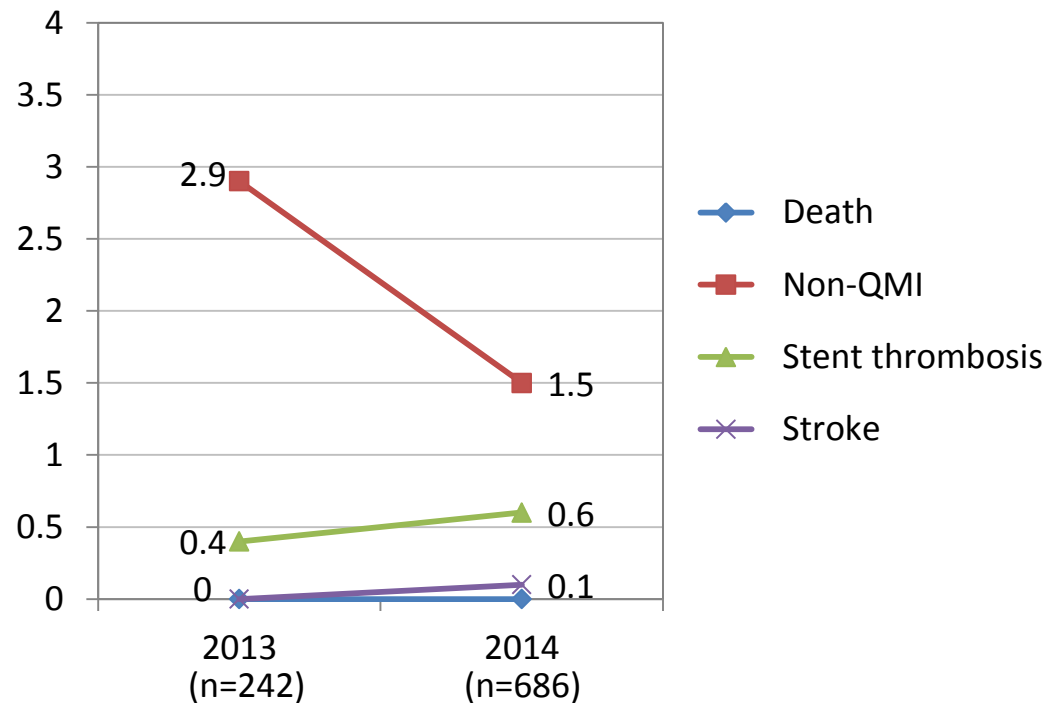
	All	P-Value	Complete	P-Value (Fisher two-side)
Contrast induced nephropathy		0.68		0.54
Coronary perforation		0.62		0.21
Cardiac tamponade		0.19		0.57
Emergency CABG		1		1
Vascular access site complication		0.57		1

# 治療成績 In-hospital outcome

## All data



## Complete data



	All P-Value	Complete P-Value (Fisher two-side)
Death	0.24	-
Non-QMI	0.47	0.13
Stent thrombosis	1	1
Stroke	1	1